

# PROPOSED FURNITURE PLAN - PHASE 2

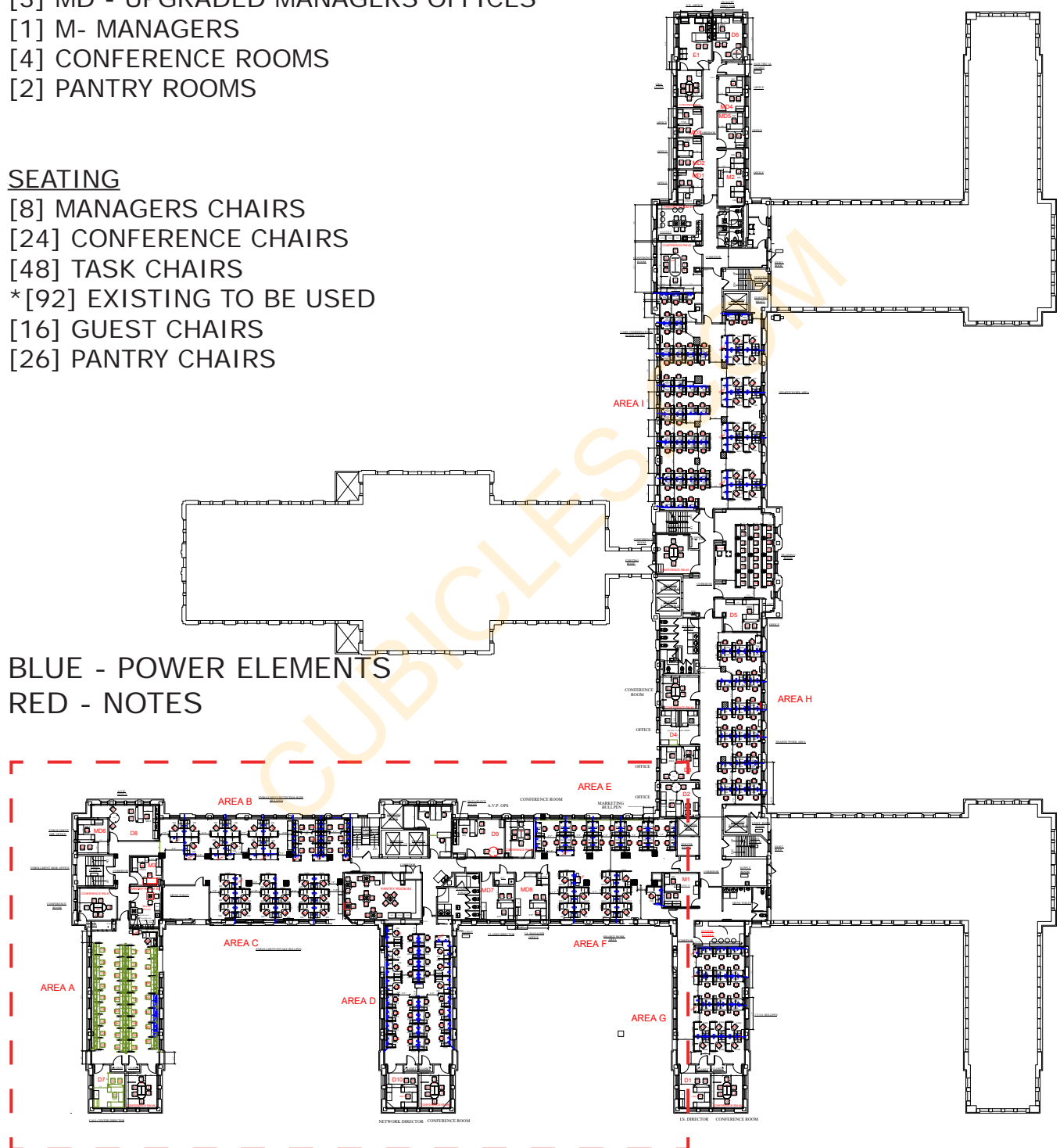
## 5TH FLOOR

- [137] CUBICLE STATIONS
- [4] D - DIRECTORS
- [3] MD - UPGRADED MANAGERS OFFICES
- [1] M- MANAGERS
- [4] CONFERENCE ROOMS
- [2] PANTRY ROOMS

### SEATING

- [8] MANAGERS CHAIRS
- [24] CONFERENCE CHAIRS
- [48] TASK CHAIRS
- \*[92] EXISTING TO BE USED
- [16] GUEST CHAIRS
- [26] PANTRY CHAIRS

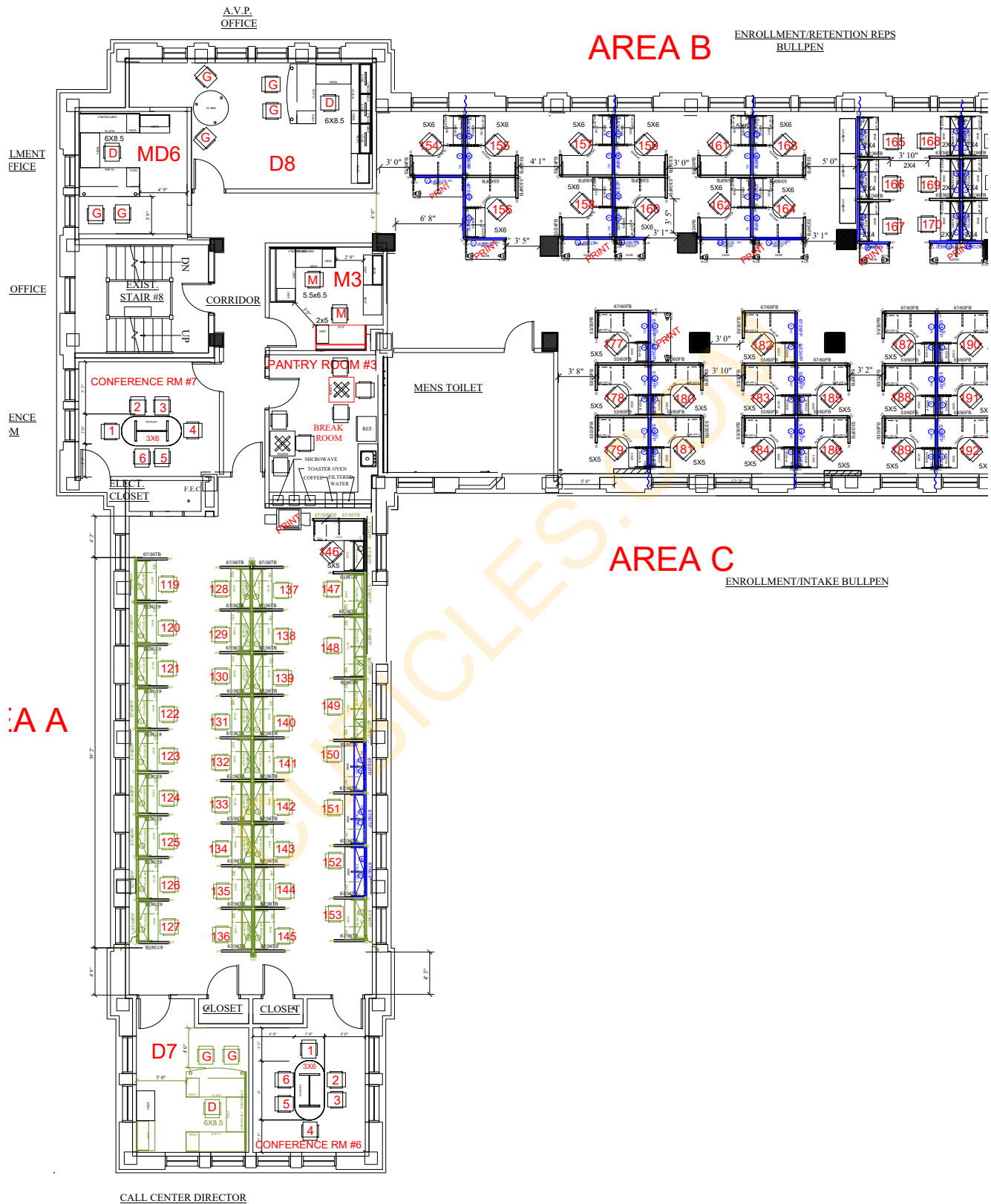
BLUE - POWER ELEMENTS  
RED - NOTES



### NOTES:

- \*ALL IMAGES ON THIS PDF ARE FOR REFERENCE PURPOSE ONLY. NOT SPECIFIC TO THE PROJECT.
- \*TRANSPARENT PANELS ARE ONLY TRANSPARENT FOR VISUAL PURPOSE. NOT GLASS.

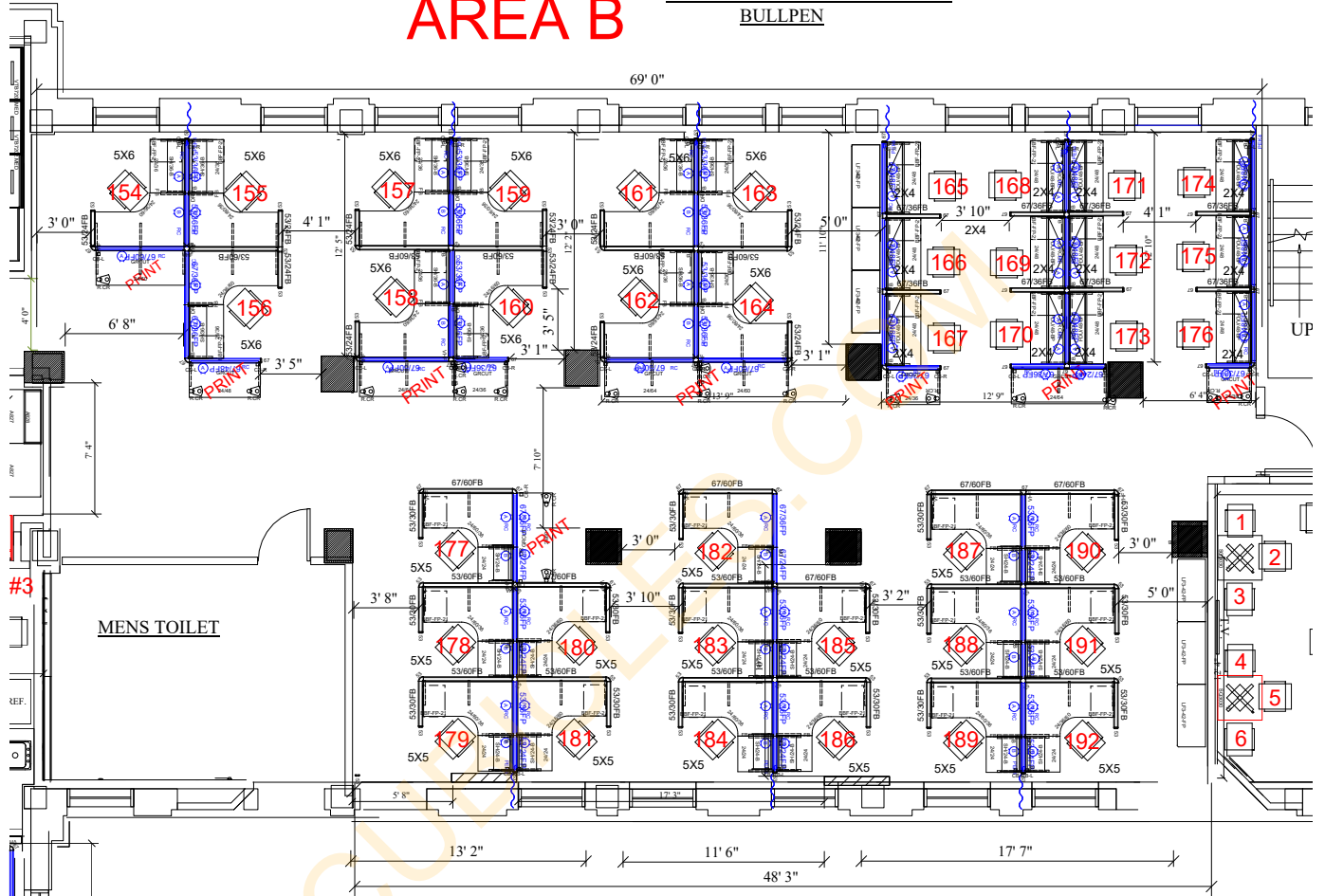
# CLOSE UP 1



# CLOSE UP 2

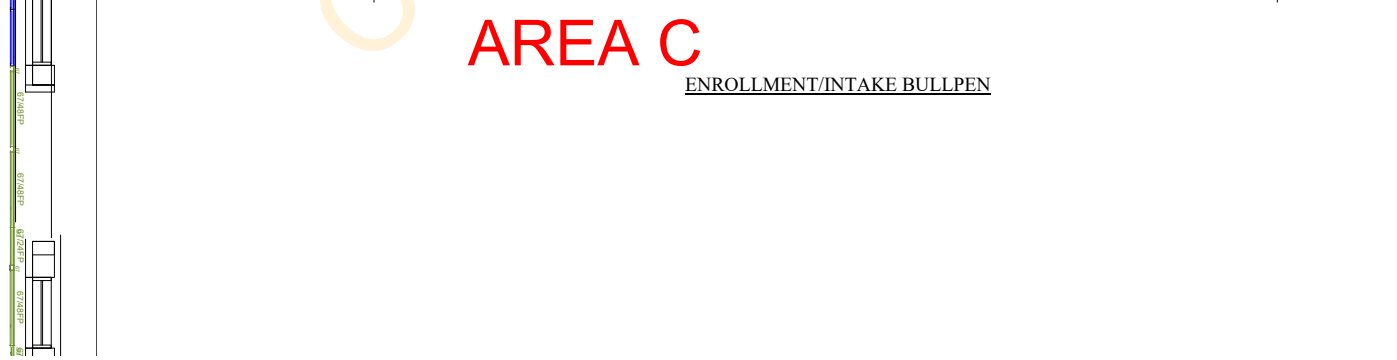
## AREA B

ENROLLMENT/RETENTION REPS  
BULLPEN



## AREA C

ENROLLMENT/INTAKE BULLPEN



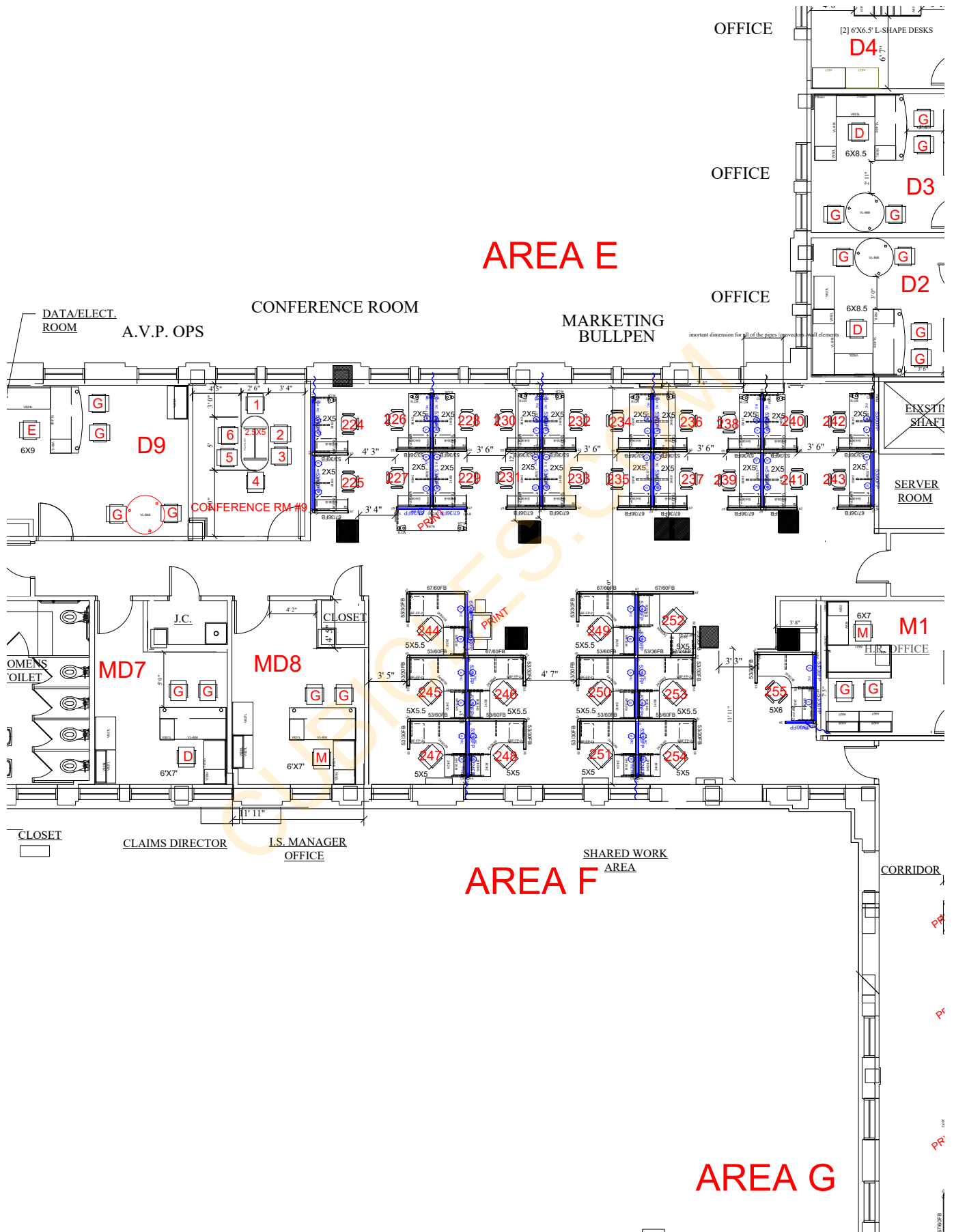
# CLOSE UP 3

ATTENTION REPS



NETWORK DIRECTOR CONFERENCE ROOM

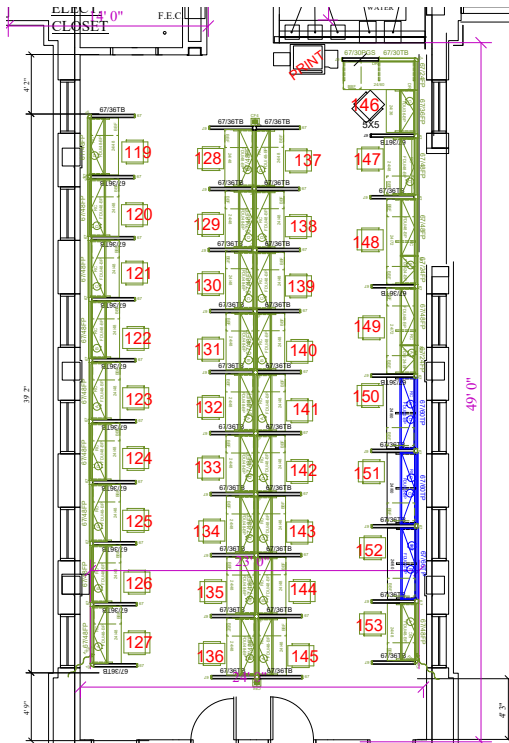
# CLOSE UP 4



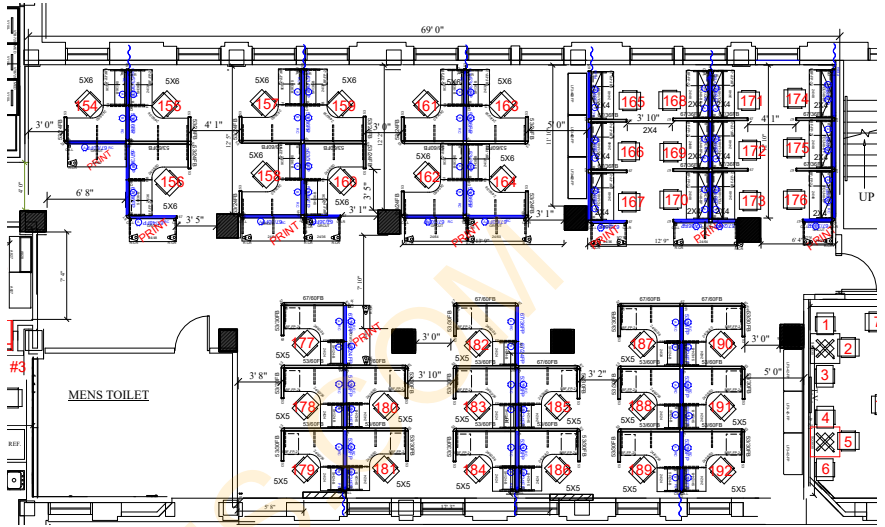
# [6] CUBICLE AREAS - A-F

\*O2 Series Corporate Office Furniture

## AREA A

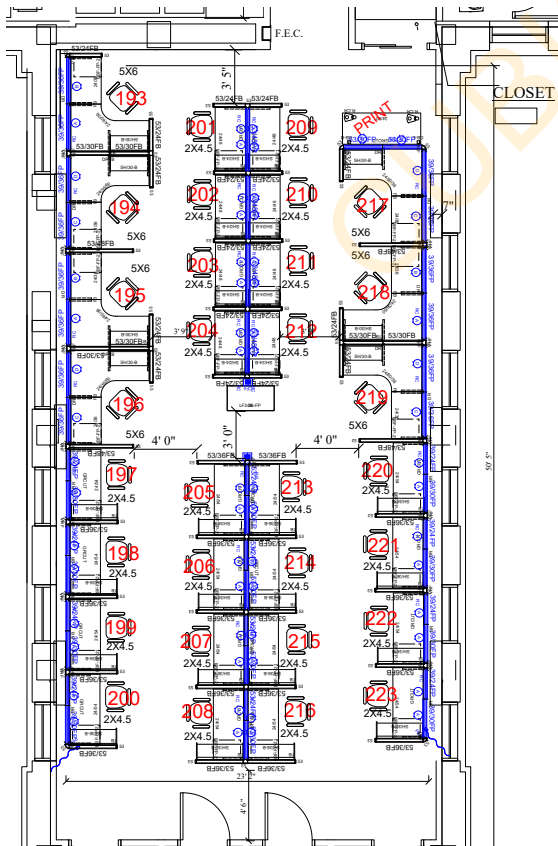


## AREA B

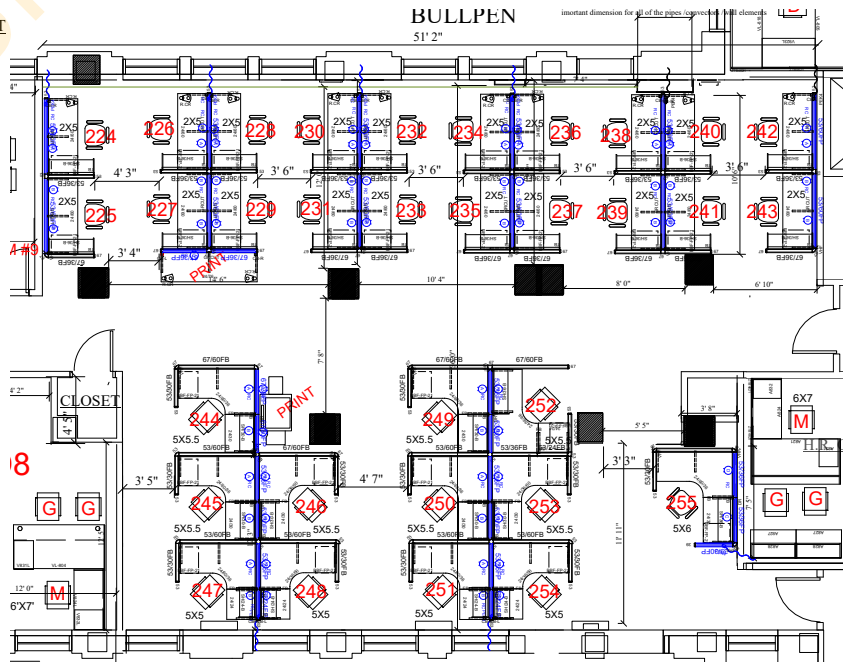


## AREA C

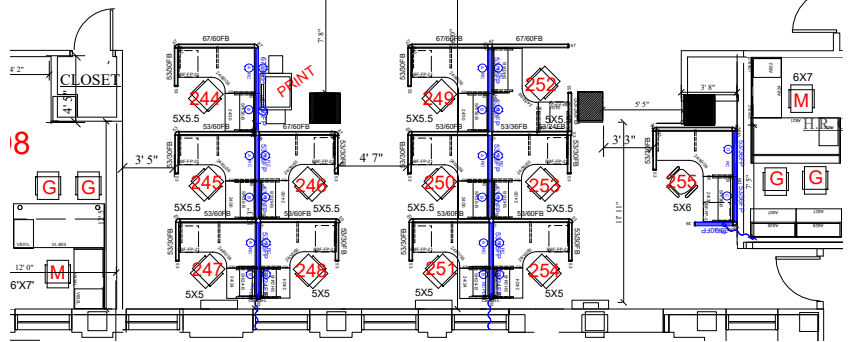
## AREA D



## AREA E



## AREA F



# CONFERENCE ROOMS

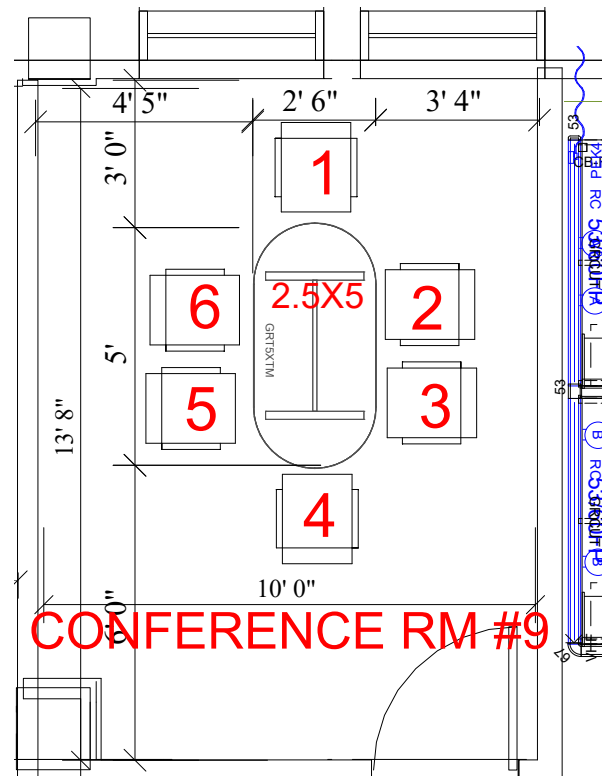
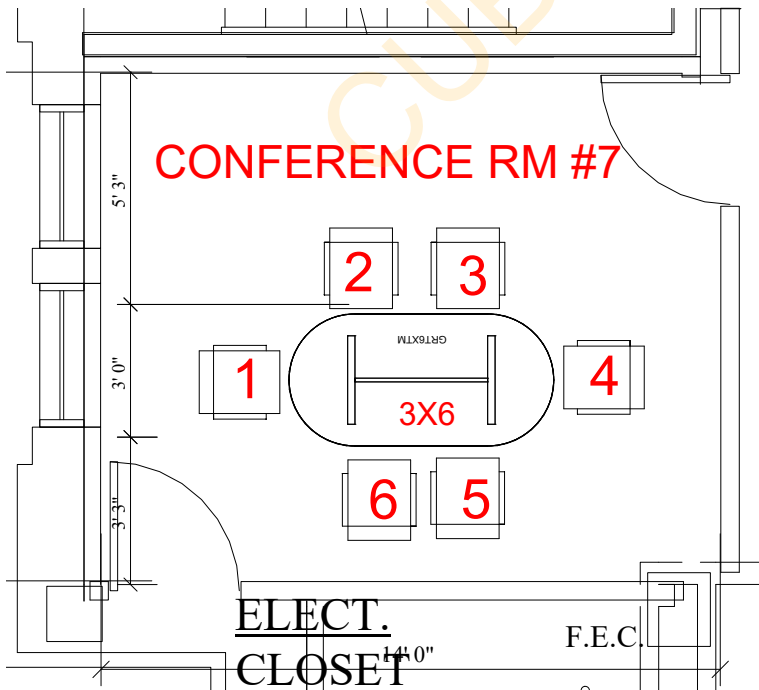
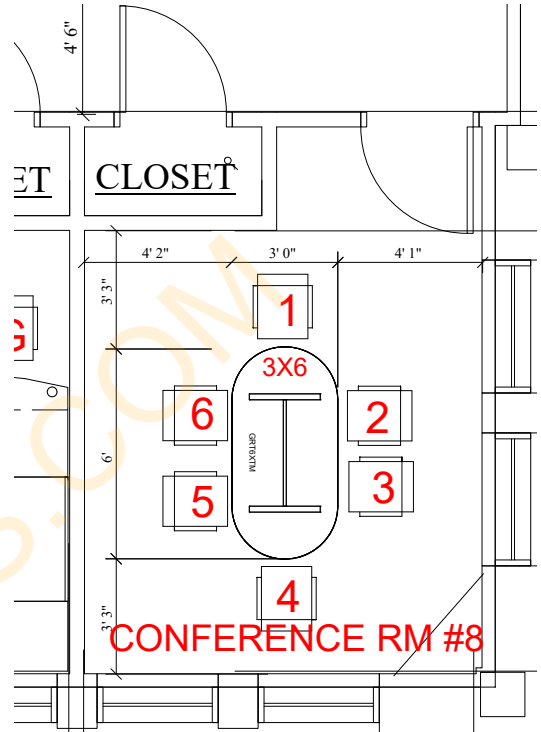
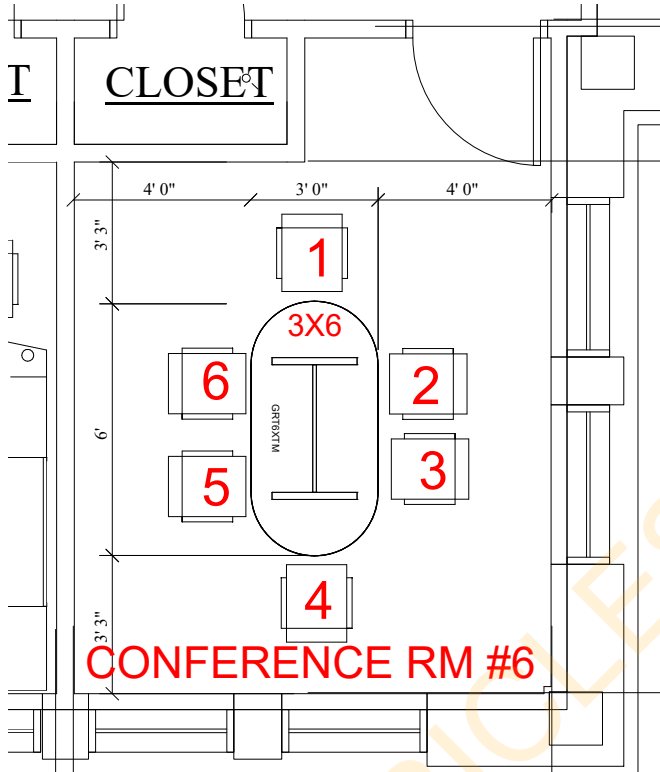
\*GLOBAL BOARDROOM LAMINATE

## [4] NON-POWERED TABLES

[1] 2.5'X5' [CONFERENCE RM#9]

[3] 3'X6' [CONFERENCE RM#6, 7 & 8]

RACETRACK TOP | SLAB BASES

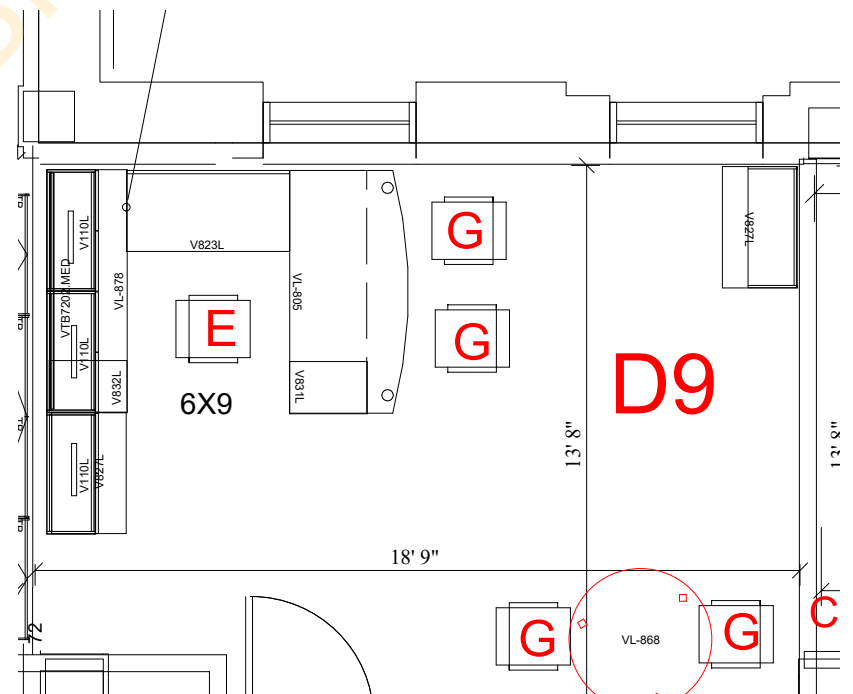
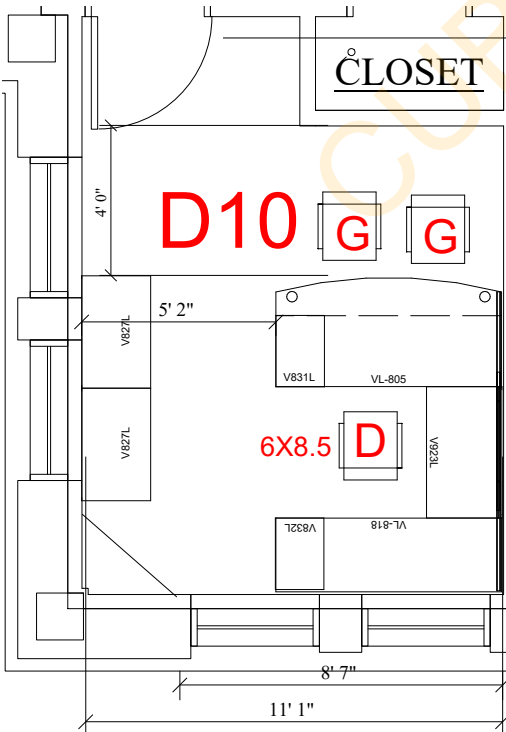
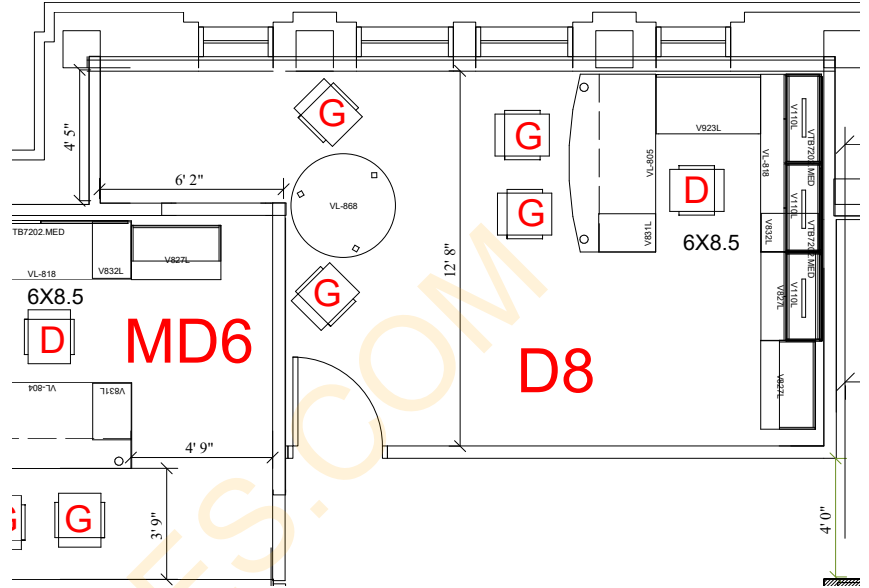
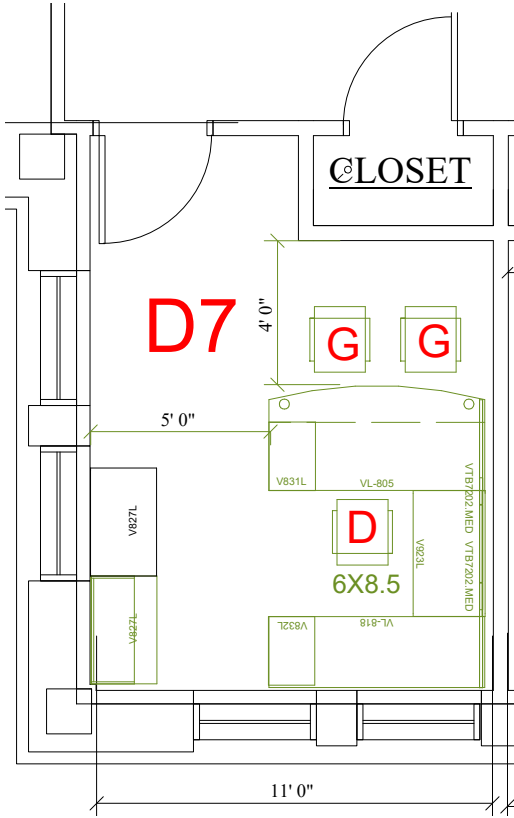


# D - DIRECTORS OFFICES - QTY. 4 CHERRYMAN 'VERDE' LAMINATE

D

GREEN - EXISTING  
FURNITURE TO BE USED

A.V.P.  
OFFICE





**BREAK ROOMS - QTY. 2**  
**REGULAR HEIGHT - 29"H TABLES**

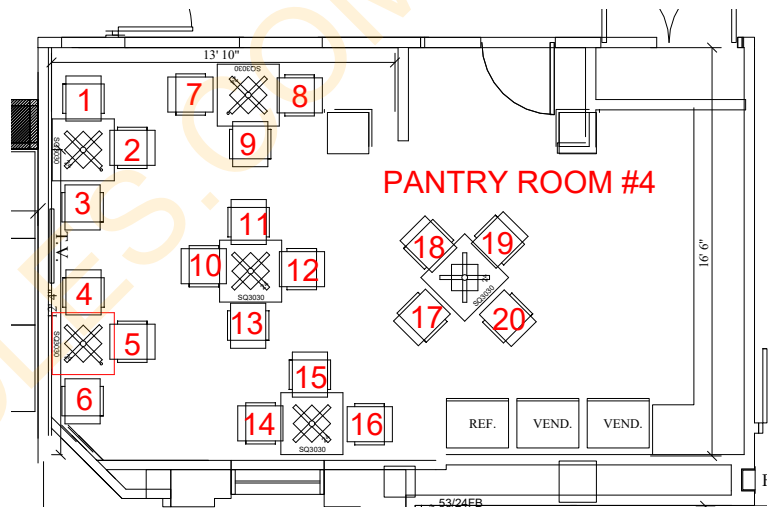
TABLE DIMENSIONS: 30"X30"X29.5"H

\* SQUARE TOP | METAL BASE  
 TOP: WHITE  
 BASE: METAL - GREY



GLOBAL 'DUET' PANTRY CHAIRS

STANDARD HEIGHT [29"H] - QTY. 26



\* IMAGES FOR REFERENCE ONLY. NOT SPECIFIC TO THE PROJECT